

PARAMETERS:

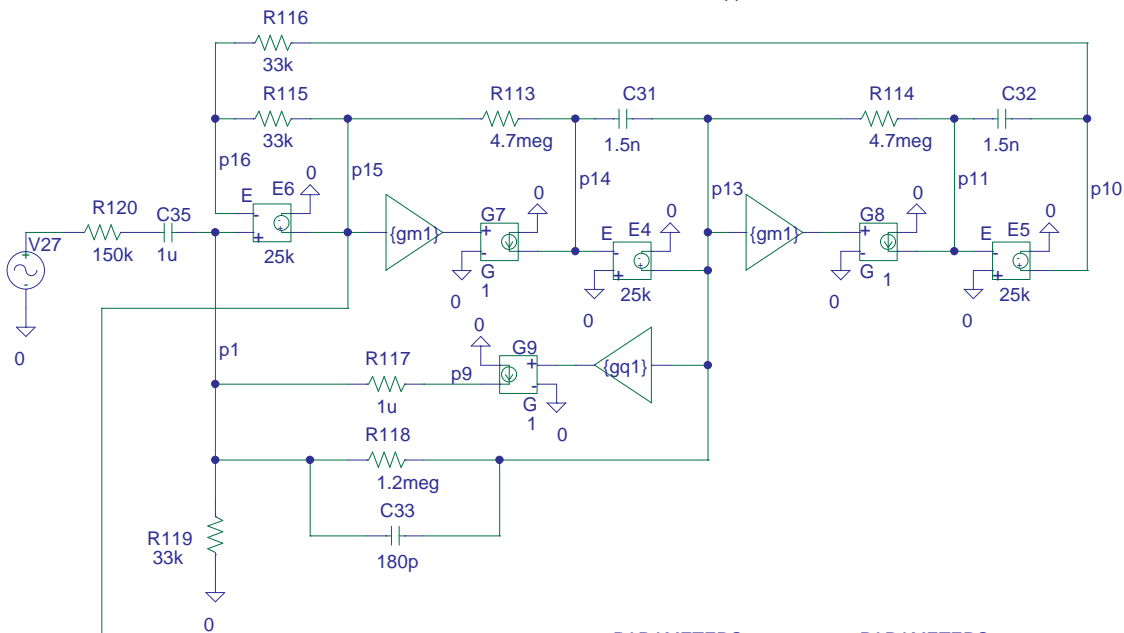
gm1 10u

10uS == 1kHz

PARAMETERS:

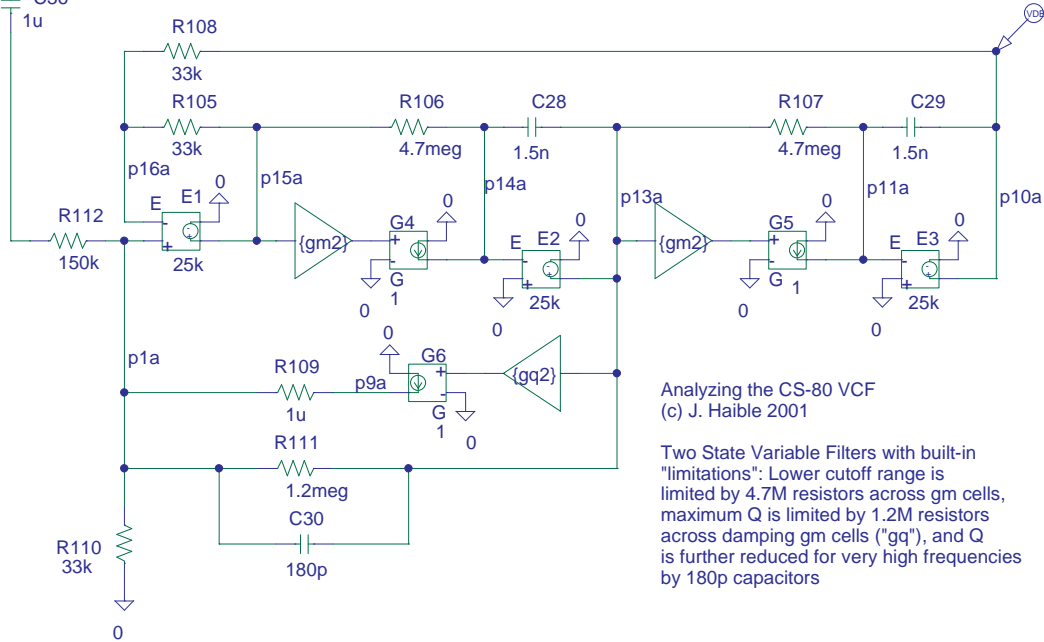
gq1 1u

approx. 20uS == minimum Q



PARAMETERS:
gm2 10u

PARAMETERS:
gq2 1u



Analyzing the CS-80 VCF
(c) J. Haible 2001

Two State Variable Filters with built-in "limitations": Lower cutoff range is limited by 4.7M resistors across gm cells, maximum Q is limited by 1.2M resistors across damping gm cells ("gq"), and Q is further reduced for very high frequencies by 180p capacitors